



Village Co-Op Voice

A Cooperative serving the community with wholesome, affordable foods in a spirit of respect for each other and our world.

Winter 2008



Financial Report Through November 26, 2007

This report reflects the financial data through November 26, 2007. This data was used by the Finance Committee and the Board in developing the proposed budget for FY 2008 (see below). Total sales for this period were \$258,516, a 7.1% increase compared to the same period in FY 2006. Member sales represent 36.5% of total sales, non-member sales 46.5% and pre-order sales 13.8%.

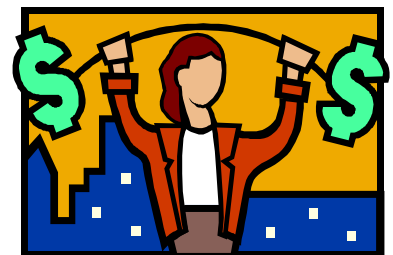
For this period, the gross profit was \$61,148 or 23.65% of sales and operating expenses were \$62,158. Since December is typically our strongest month for sales, we anticipate that our gross profit will exceed our operating expenses at the end of FY 2007.

As of November 26, 2007, the Co-op's assets total \$38,401 including \$8,806 in savings, \$2,704 in the checking account, \$20,333 in product inventory, \$2,113 equity in other food co-ops and \$3,000 invested in the Capital District Community Loan Fund (CDCLF). The remaining assets consist of cash including accounts receivable and funds to be deposited, prepaid insurance and equipment.

In fiscal year 2007, with member approval, the Co-op continued its investment of \$3,000 in the CDCLF, a non-profit, socially responsible financial institution serving the NYS Capital Region including Washington County. **Each year the Co-op membership must approve our continued investment in the CDCLF.**

Proposed Village Store Co-op Budget FY 2008

The proposed budget for FY 2008 is shown in the table below and was developed by the Finance Committee and the Board. The proposed budget projects a modest 4% increase in sales and a 3% increase in operating expenses. The professional fees include an allowance for an annual review by an independent auditor. **The membership will be asked to approve the proposed budget at the annual membership meeting on Wednesday, January 23 at 7pm in the Beacon Feed.**



Please see proposed budget on page 2.

Village Co-op Budget 2007 and 2008 Proposed

Category	Jan 1 – Nov 26, 2007 Actual	Approved Budget FY 2007	Proposed Budget FY 2008
Personnel	\$39,243	\$48,474	\$47,971
Insurance	2,569	2,000	2,500
Licenses and Fees	877	1,500	2,100
Professional Fees	4,159	3,200	4,120
Rent	3,150	3,900	4,200
Utilities	4,835	5,800	5,500
Equipment, Supplies, Repairs	5,422	4,500	5,200
Taxes	268	100	100
Telephone	651	600	700
Education	0	500	250
Outreach	984	1,000	1,250
Contingency	0	500	500
Total Expenses	\$62,158	\$72,074	\$74,391
Gross Profit (Actual/Projected)	\$61,148	\$72,074	\$74,391
Sales (Actual/Projected)	\$258,516	\$292,000	\$304,000
Gross Margin (Actual/Projected)	23.65%	24.68%	24.5%



We are sorry to say goodbye to a wonderful member, Dick Abrahamson, who passed away Dec. 9th. Dick retired as a human resource manager from Valmet Inc. of Biddeford, Maine and on August 31, 1995 retired from the Army Reserves as a captain with 28 years of service. He enjoyed bee keeping, and the outdoors, especially gardening.

A Message from the Chair...

Dear Co-op Members,

I have been chairperson of the COOP Board of Advisors for the last year and, as my term is ending, I wanted to take this opportunity to reflect a bit on what we have done and what I have learned that the COOP means to the Cambridge community. First, we have had a successful year financially due to the extraordinary efforts of the managers and the members. We have discussed issues that ranged from the Freight Yard Revitalization project, future ideas for the role of the COOP, importance of providing local food, energy conservation in the store and Hubbard Hall and we have reaffirmed our mission statement: "A Cooperative serving the community with wholesome, affordable, foods in a spirit of respect for each other and the world." I think the most powerful thing, however, has been to see this organization of volunteers function as efficiently as it has because people think it is important – it means something beyond food. In a society that seems to promote self interest exclusively our COOP has stayed vibrant (and solvent) for many years. This would not be possible without the efforts of many people. The board thanks you all.

~Janet Foley

Recipes from the Co-op Shelves!

Submitted by Charity Chapman

Gluten Free Molasses Cookies



Pre-heat oven to 350 degrees

3/4 cup butter

1 egg

4 Tblsp molasses

2 1/4 cups Pamela's Gluten Free Baking &

Pancake Mix

1/4 tsp salt

1/2 tsp cloves

1/2 tsp cinnamon

1 tsp ground ginger or better yet grated fresh ginger!

Mix wet ingredients to dry.

Either bake as cookies 12 to 15 minutes or spread into baking dish and bake as bars.

Bake a little longer for bars. Makes a yummy, chewy bar! Sprinkle tops with a little sugar or turbinado sugar before baking.

A Day in the Life !

It started like most mornings at the coop...

fresh baked bread sitting at the back door in brown paper sacks like you see in the old time movies,

Volunteers running late, oh the Holiday's, the credit card machine acting like a temperamental teen, the phone ringing, people checking the schedule, the UPS man delivering our holiday order our; snacks and chocolates to be bagged ,20 boxes, count them!!!

Cheeseworks delivery 3 hand trucks full. Where's the UNFI driver?? Not sick in Queensbury again like before Thanksgiving when our Turkeys were due Monday, delayed, Tuesday ?, Delayed, okay before Thanksgiving Please !

The drivers going to be here right? I ask the transportation department at UNFI. They assure me he will. But I've been here before I tell them, promises of delivery and the truck drivers running out of time. They legally have to get off the road after 14 hours.

I get the call. Our truck is heading down RT 22 just on the border of Cambridge.

" I'm out off time. I only have 15 more minutes before I have to be off the road". The phone goes dead, we lose connection.

But this wasn't going to be like all the rest of the day, this day was turning out be different, out of the ordinary I might add. I call UNFI angry and I let them know it. As the Cheeseworks order is finally in the fridge, the driver hears my conversation on the phone with UNFI. "Hey there's your truck".. The UNFI driver strolls in the front door, double parked blocking traffic on main street. Again he states how he's got 15 minute to get to a Hotel and I need to get this truck unloaded. I look at the Cheeseworks guy " What does that mean?"

Two pallets loaded, covered in shrink wrap and dumped on the sidewalk is what it meant and we have to get it in the store in 12 minutes!!

Is this some kind of rural supermarket sweepstakes, running heavy boxes of groceries in and out of what seemed to be a 21 degree winter day ?

As I paused and reflected on this moment it occurred to me that this IS like every day at the CO OP people came out of the walls ,off the streets, volunteers young and old grabbed the boxes without complaining , whining or asking, they just did what needed to be done. Like busy ants we had a line of people carrying the load back and forth until the last box was unloaded.

I love this job.....

~Nancy





Co-Op Board of Advisors:

Janet Foley, chair; Clem Crowe, vice-chair; Ed Dauenheimer, treasurer; Louisa Matthews, Penelope Poor, Chris Callahan, Jack Guzi, Kathleen Breault, Jane Wright, Bethany McCauley, Kathy Idleman, MaryAnne Pender, William Figlozzi

Staff:

Nancy Bariluk Smith, manager; Barb Dooley, assistant manager; Suzanne Seay, Saturday shift supervisor; MaryAnn Short, bookkeeper

Co-Op Business Hours: Mon—Sat 10:00am—5:00pm Open Thursdays until 8:00pm

**Semi-Annual
Membership Meeting
Wednesday, January 23, 2008
7:00pm
Beacon Feed**

- Welcome & Intro 7:00pm**
7:15pm Business Meeting
- Annual Report
 - Financial Report
 - Proposed Budget (vote to approve)
 - other business...



The Joys of Volunteering! from Cartoonist Hilary Allison

